



SHAUN STOTTLER  
General Manager

As we step into the fall season, we do so with a mix of anticipation, confidence, and preparedness. Harvest time is almost here, and with it comes the opportunity to put months of planning into action. The fall application of nutrients is ready to go into the soil, and our team at Hutchinson Co-op is fully prepared to serve our surrounding communities when their fields are ready.

We are proud to continue delivering the reliable, high-quality service our patrons have come to

expect. Our staff ranks among the best, and their dedication ensures that this season will be another successful one.

Beyond the field, the Co-op has also been busy contracting propane for crops, home heating, and commercial use throughout the area. We're pleased to share that propane prices have remained steady from last year, providing stability and peace of mind as we move through the season together.

The U.S. propane supply is in good shape this year. Production is at record highs, and while a large share is being exported, there's still enough to meet demand here at home. Most propane in the U.S. comes from natural gas processing, and production has nearly doubled over the last 10 years.

The U.S. is the world's top producer of propane, but we also bring in some supply from Canada to help keep up with heating and agricultural needs during the busy fall and winter months. While supply looks steady, weather and transportation challenges can still cause prices to shift from time to time.

## Key Factors in U.S. Propane Supply

Several factors play into the availability and cost of propane each season:

- **Strong U.S. Production:** Domestic propane production remains high, thanks to natural gas processing from shale deposits. The U.S. produces more propane than it consumes.
- **Rising Exports:** A large share—about 65% in 2024—is exported overseas as new export facilities have come online.
- **Supplemental Imports:** To meet peak seasonal demand, especially in the Midwest and East Coast, the U.S. also brings in propane from Canada by rail.
- **Infrastructure Challenges:** Limited pipeline and port capacity can occasionally affect supply and create market swings.
- **Seasonal Demand:** Cold weather, home heating needs, and agricultural uses like grain drying drive spikes in demand during fall and winter.

The U.S. market balances steady production with strong export and seasonal demand. At Hutchinson Co-op, we actively monitor these factors to make propane purchases at the right times, ensuring reliable supply for our patrons.

Here's a more newsletter-friendly version of your refined fuel price update. It's simplified, conversational, and broken into clear sections that are easy for readers to absorb:

## Fuel Price Outlook

According to the latest U.S. Energy Information Administration (EIA) forecasts, fuel prices are expected to trend lower through 2026. The main drivers are falling crude oil prices, slowing global demand, and rising oil inventories. However, not all areas or fuel types will see the same effects. The U.S. West Coast and diesel markets may experience smaller price drops due to tighter refining capacity and low distillate inventories.

## Diesel Prices

- U.S. diesel prices are forecasted to average below \$3.50 per gallon in 2026, about 20 cents lower than in 2025.
- The decline is mainly tied to lower crude oil prices.
- Low U.S. distillate inventories are expected to continue, keeping diesel markets tighter. This means prices could still spike during high-demand periods, such as fall harvest.

## Market Factors to Watch

- **OPEC+ Production:** In August 2025, OPEC+ announced faster increases in production, boosting global oil inventories and weighing on crude prices.

Continued onto page 2



Continued from page 1

- **Rising Inventories:** Global oil supplies are growing faster than demand, which historically leads to lower prices.
- **Tighter Refining Capacity:** Refinery closures in Houston and Los Angeles are reducing U.S. refining capacity, which could keep refined fuel margins higher even as crude prices fall.
- **Geopolitical Risks:** Conflicts in the Middle East and the ongoing Russia-Ukraine war create uncertainty that can drive prices up at any time.
- **Economic Conditions:** Global economic activity and trade policies will continue to influence both oil demand and fuel prices.

At Hutchinson Co-op, we keep a close eye on these markets to help anticipate price shifts and ensure reliable fuel supply for our members.

As a tribute to the great Paul Harvey, I leave you with "So God Made a Farmer". If you listen while you read, you can hear it in his voice. And on the 8th day, God looked down on his planned paradise and said, "I need a caretaker" -- so God made a Farmer.

God said, "I need somebody willing to get up before dawn, milk cows, work all day in the fields, milk cows again, eat supper, then go to town and stay past midnight at a meeting of the school board" -- so God made a Farmer.

"I need somebody with arms strong enough to rustle a calf and yet gentle enough to deliver his own grandchild; somebody to call hogs, tame cantankerous machinery, come home hungry, have to wait lunch until his wife's done feeding visiting ladies, then tell the ladies to be sure and come back real soon -- and mean it" -- so God made a Farmer.

God said, "I need somebody willing to sit up all night with a newborn colt, and watch it die, then dry his eyes and say, "Maybe next year." I need somebody who can shape an ax handle from a persimmon sprout, shoe a horse with a hunk of car tire, who can make harness out of haywire, feed sacks and shoe scraps; who, planting time and harvest season, will finish his forty-hour week by Tuesday noon, and then pain'n from tractor back, put in another seventy-two hours" -- so God made a Farmer.

God had to have somebody willing to ride the ruts at double speed to get the hay in ahead of the rain clouds, and yet stop in mid-field and race to help when he sees the first smoke from a neighbor's place -- so God made a Farmer.

God said, "I need somebody strong enough to clear trees and heave bails, yet gentle enough to tame lambs and wean pigs and tend the pink-combed pullets, who will stop his mower for an hour to splint the broken leg of a meadow lark." It had to be somebody who'd plow deep and straight and not cut corners; somebody to seed, weed, feed, breed and rake and disc and plow and plant and tie the fleece and strain the milk and replenish the self-feeder and finish a hard week's work with a five-mile drive to church; somebody who would bale a family together with the soft strong bonds of sharing, who would laugh, and then sigh, and then reply, with smiling eyes, when his son says that he wants to spend his life "doing what dad does" -- so God made a Farmer.



TINA HUEBNER  
Assistant General Manager

We have partnered up with AgQuest to offer producer financing. We will be offering many different programs through out the year. The current one we have is just for fall fertilizer, with a due date of 1.12.26. We will be rolling out another program for spring fertilizer and chemical needs later this fall. Check our website for what is being offered: [www.hutchcoop.com](http://www.hutchcoop.com)

Our sales team will have all the options also available when they start doing the farm planning with you.

We still will offer the JDF farm plan as another option.

I thank you for your business and for the many customers who pay their bills on time.

Tina Huebner  
Assistant General Manager  
320-234-0577  
[thuebner@hutchcoop.com](mailto:thuebner@hutchcoop.com)

#### To learn more, contact your Sales Agronomist:

Chris Plamann  
[cplamann@hutchcoop.com](mailto:cplamann@hutchcoop.com)  
320.583.8403

Andy Rasmussen  
[arasmussen@hutchcoop.com](mailto:arasmussen@hutchcoop.com)  
320.583.1496

Darien Hillmann  
[dhillmann@hutchcoop.com](mailto:dhillmann@hutchcoop.com)  
320.552.5042

Josh Filk  
[jfilk@hutchcoop.com](mailto:jfilk@hutchcoop.com)  
320.583.8850

Do you have additional questions, or don't feel comfortable applying online? Contact your AgQuest Relationship Manager:

RYAN HOFFMANN  
507.766.1940  
[rhoffmann@agquest.net](mailto:rhoffmann@agquest.net)

As simple as . . .

- 1 Apply online **TODAY!**
- 2 Digitally sign **TODAY!**
- 3 Advance funds **TODAY!**\*

\*For same-day funding, documents must be signed prior to 5 p.m. CST

Agronomy Locations: 1420 Adams Street, Hutchinson, MN 55350 | 320.587.3229  
23189 Hwy 5, Arlington, MN 55307 | 507.964.2283

AgQuest Financial: 711 Front St., PO Box 67, Morgan, MN 56266 | 877.626.7453 | [www.agquest.net](http://www.agquest.net)

## Silver Lake C-Store



CASIE ZASKE  
C-Store Manager

Customers often share how much they appreciate our clean, fully stocked store—we've got everything from snacks to drinks you can count on!

### ***Hungry? Call Ahead!***

If you'd like your food ready when you arrive, call us at 320-327-2500 about 20 minutes before pickup.

### **Start your morning with our breakfast favorites:**

- Croissant or biscuit sandwiches with sausage, egg, and cheese
- Breakfast pizzas
- Breakfast burritos (Original, Steak, Skillet, and Denver)

### **Grocery Grab & Go:**

We stock the basics—milk, bread, cheese, and butter—as well as fresh hot dogs and brats from Havenwood Meats of New Germany, MN (formerly Schroeder Meats). Perfect for an easy supper!

**We're  
Hiring!**  
Ask in-store  
for details

### **October's Coffee Flavor:**

Highlander Grogg—a customer favorite for fall mornings.

### **Energy Drink Favorites:**

- Celsius (12oz & 16oz)
- Ghost
- Monster
- C4

### **Hot Food Options:**

- Burgers
- Pizza slices or personal pan pizzas
- Popcorn chicken
- Chicken bacon ranch rolls

## **NEW THIS SEASON! HOT HONEY MENU ITEMS**

### **CHICKEN BISCUIT**

### **CHICKEN BACON MELT**

### **CHICKEN BACON BBQ**



October is Breast Cancer Awareness Month. Stop in and check out our awareness items!



Back L to R: Indy Mason, Kaelyn Frieler, Tristan Darnell, Matt Mielke, Sydney Ardolf, Wendy Wosmek  
Front L to R: Carly Eischens, Daina Posusta, Jane Loch, Jade Frieler, Brianna Lowden

## P-K Soil Sampling & Fall Fertility



ANDY RASMUSSEN  
Sales Manager, Hutchinson

### Sampling Methods

- **Composite Sampling:** Soil cores are taken from multiple spots across a larger area and mixed together. This gives you an average reading of nutrient levels for the entire field.
- **Grid Sampling:** Fields are divided into smaller grids—typically 2.5 or 5 acres. With GPS technology and geo-fencing, nutrients can be applied with precision where they are most needed.
- **Zone Sampling:** Fertilizer rates are adjusted based on specific field factors such as soil type, productivity rating, or organic matter content. This method allows for highly customized management.

### Why Apply P-K in the Fall?

Fall is an excellent time for phosphorus (P) and potassium (K) applications. Compaction is generally less of a concern compared to spring, and you don't have to wait on busy spring fieldwork to get nutrients applied. By applying P-K before your fall tillage pass, the nutrients are well incorporated into the soil where plant roots need them.

### Product Spotlight: P-Max

Research shows that only 5–25% of phosphate applied is immediately plant-available because it quickly binds to positively charged elements in the soil, like calcium and magnesium. P-Max is designed to keep more phosphate available—up to 50%—so plants can access it when they need it most. More available phosphate means better plant development and greater yield potential.

### Look Ahead

As you plan fertilizer applications this fall, think about next year's growing season. Sound fertility management now gives your crops the foundation they need for strong performance and higher yields.



## Meet the Leaders of Hutchinson Co-op

At Hutchinson Co-op, leadership is about more than making decisions—it's about making a difference. Our leadership team is dedicated to living out the values of cooperation, integrity, and service every day. You'll often find them not just in the office, but out in the community—listening, supporting, and working alongside our members.

### Rooted in Community

Each leader brings a unique set of skills and experience to the table, from agriculture and energy to retail and operations. Together, their focus is simple: to keep Hutchinson Co-op thriving as a reliable, forward-thinking partner for our patrons and communities.

### Why It Matters

Strong leadership means better service and smarter choices that benefit you—our members. From supporting local producers to ensuring dependable energy and ag services, our team works with you in mind.

### Always Open to You

We believe transparency builds trust, so our leadership team welcomes feedback, questions, and ideas. Stop by, say hello, or reach out anytime—we're here for you. Thank you for being part of the Hutchinson Co-op family. Together, we're building something special.

### Your Co-op Leaders

- Dean Brehmer, Service Station Manager – 41 years of service
- Chris Bomstad, Office Manager – 41 years of service
- Tina Huebner, Assistant GM – 39.5 years of service
- Chris Plamann, Agronomy Manager – 2.5 years of service
- Andy Rasmussen, Sales Manager – 18 years of service
- Peter Wilson, Energy Manager – 5 years of service
- Mike Irlbeck, Grain Manager – 3 years of service
- Casie Zaske, Silver Lake C-Store Manager – 6 years of service
- Nichole Degn, Adams C-Store Manager – 5 years of service
- Shaun Stottler, General Manager – 7 months of service



*Back L to R: Tina Huebner, Peter Wilson, Andy Rasmussen, Dean Brehmer, Chris Plamann  
Front L to R: Shaun Stottler, Mike Irlbeck, Nichole Degn, Casie Zaske, Chris Bomstad*

## Fall Nitrogen Applications



JOSH FILK  
Location Lead/Sales,  
Arlington

When applying nitrogen in the fall—whether Anhydrous Ammonia (NH<sub>3</sub>), urea, or another form—it's important to remember that corn doesn't begin rapid nitrogen uptake until June or July at the V8 growth stage. To make the most of your investment, nitrogen applied in the fall needs to be timed

correctly and protected against spring challenges like heavy rainfall, leaching, and denitrification.

### Protecting Your Nitrogen Investment

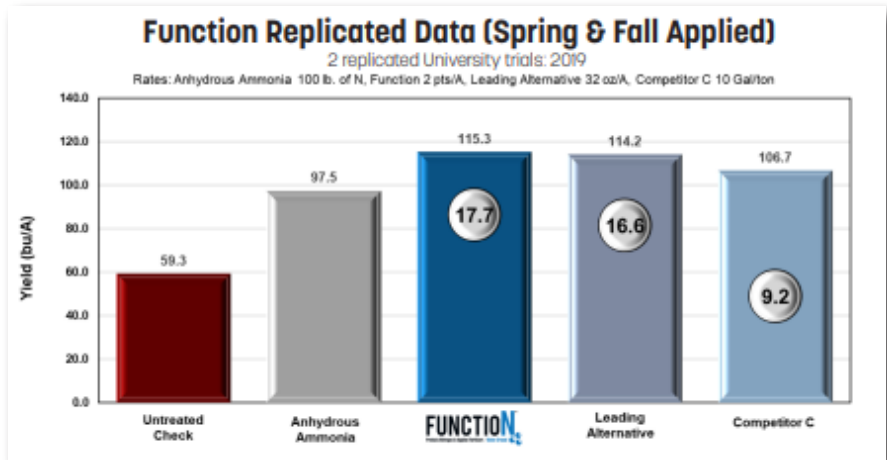
- **FunctionN:** A proven add-in for anhydrous ammonia applications. FunctionN works by temporarily slowing down soil bacteria, preventing nitrogen from being converted into a leachable form too early. When the soil warms up in summer, bacteria reactivate—making nitrogen available right when corn needs it most. This helps protect your nitrogen and ensures your crop gets the full benefit.

- **SuperU:** A treated dry urea product that provides protection both below and above the surface. It slows the conversion of nitrogen underground while also guarding against volatility in the top few inches of soil. Once incorporated with fall tillage, it's protected on both sides. SuperU is a great option if you'd like to apply all of your nutrients in one pass in the fall, and it also works well as a preplant application in spring.

### Plan Ahead for Efficiency

Choosing the right product this fall means you'll have a stronger, more efficient nutrient program next summer—helping your fields stay green and productive when it matters most.

From everyone at Hutchinson Co-op, we wish you a safe and successful harvest! Reach out to your Hutch Co-op sales staff anytime for more information about protecting your nitrogen investment.



*A Special Thank You*

**TO OUR TWO SUMMER  
AGRONOMY INTERNS,  
BERKELY STEFFEN & SHELBY HOPP!**

**WE APPRECIATED ALL THE HARD WORK  
FROM YOU BOTH THIS SUMMER.**

## Agronomy Center Expansion Update



CHRIS PLAMANN  
Agronomy Manager

The summer of 2025 is now behind us, and it was certainly a memorable one here at Hutchinson Co-op. On June 12, a severe storm with winds up to 85 mph passed through the Hutchinson Agronomy Center, causing significant damage to our main office and warehouse.

Thanks to the quick efforts of our crews, cleanup began immediately. By the afternoon of June 13, much of the damage was cleared, and products had already been relocated and stored safely. A huge thank-you goes out to everyone who stepped in to help—we couldn't have done it without you!

### Rebuilding with Expansion in Mind

Following the storm, we knew we had an opportunity not only to rebuild, but also to expand and improve. For a long time, our Co-op has needed more storage for seed and chemical products—often relying on multiple sites to keep up. This expansion will change that, bringing everything under one roof so we can be more efficient, streamlined, and responsive for our growers.

### Key improvements include:

- A new 90x80 chemical facility
- Expanded bulk chemical storage, growing from 16,000 gallons to 58,200 gallons with new tanks and updated software for more efficient service
- Relocated seed bulk storage bins and seed treater to the Agronomy Center
- An office expansion to better support our patrons and growing needs

### Looking Ahead

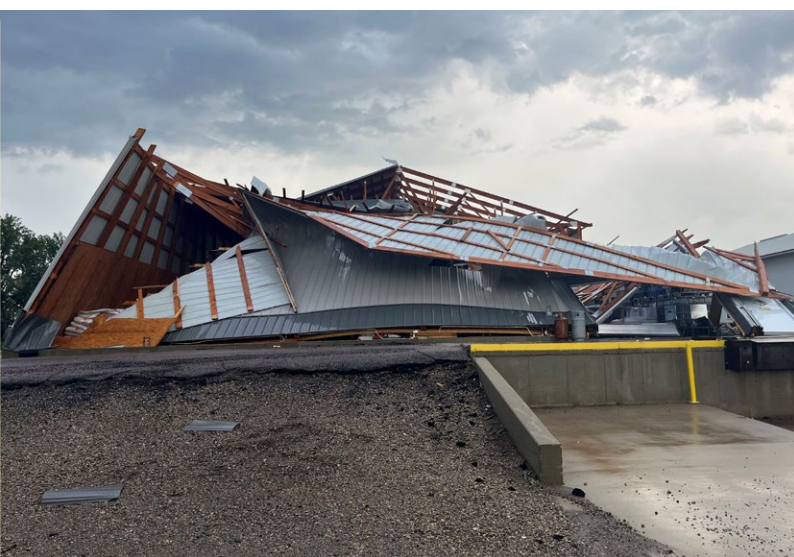
Barring any major delays, construction should be complete by mid-December. Once finished, all of our agronomy operations will be under one roof, helping us serve you faster and more effectively for years to come.

As we head into fall, our team continues to work hard to prepare for a busy season—and we'll be ready when you need us. Thank you to all our patrons for your support and for helping Hutchinson Co-op grow.

From all of us, we wish you a safe and successful harvest!



*Storm damage from June 12, 2025*



*Rebuilding progress as of September 16, 2025*



## Service Station News



DEAN BREHMER  
Service Station Manager

As we move into fall, Hutchinson Co-op is focused on delivering better service, reliable products, and great customer experience. Here's what's happening at your Service Station this season:

### Fall Tire Sale

Get ready for winter driving with our Fall Tire Sale, running October 20 – November 7, 2025. We'll have a variety of passenger and light truck tires, including private and major brands, at special prices. Stop in to prepare your vehicle before the first snow hits.

### Tire Center

Our Tire Center added a state-of-the-art tire machine, helping us service your tires faster and more efficiently.

### Fast Lube Convenience

Our Fast Lube makes oil changes quick and easy. Each oil change includes a complete service check, along with a general safety inspection. It works best to have an appointment, the fast lube is normally booked out two to three days in advance. This fall, you'll also see a fresh look in our ads featuring Jeremy from the Fast Lube team.

### Bulk Oil and Gift Card Promotion

We carry a complete line of Cenex® bulk oils and offer delivery service straight to your farm or business. This fall, take advantage of our Gift Cards for Gallons promotion: earn a \$50 gift card for every 100 gallons of qualifying Cenex® lubricants purchased between November 1, 2025, and February 28, 2026.

### Lawn & Fertilizer Care

Fall is one of the most important times of year for lawn care. Applying fertilizer in September or October helps your grass build strong roots for winter and ensures a quicker, healthier start next spring. We carry several fertilizers plus broadleaf weed control products, perfect for tackling clover, crabgrass, and dandelions this season. Ask us which is right for your lawn.

### Fall Bug Control

Spiders and Asian lady beetles are on the move this time of year. Stock up on the top-selling sprays available at the Co-op to keep your home and garage protected throughout the season.

### Bird Seed & Seasonal Products

Now is the perfect time to stock up on our top-selling bird seed blends to keep your feeders full as temperatures drop. We also offer propane cylinder filling for fall grilling and hunting trips, as well as kerosene for winter heating needs.

### Fuel Tips for Winter

Starting October 1, the biodiesel blend adjusts from 20% to 5% this lowers the pour point of the fuel which helps reduce fuel jelling and makes for easier cold-weather starting. You can help prevent fuel issues this winter by draining water, replacing filters, and filling up with Cenex pre-blended Premium Winter Diesel—either Roadmaster Seasonally Enhanced or Roadmaster Winter Master. For off-road equipment, we also offer dyed winter diesel blends customized for the cold. Our staff is here to help you choose the right product for your needs.



We're excited to welcome **Mathew Veltman** to the Hutchinson Co-op Tire Center! Mathew joined us in August and brings energy, a great attitude, and a love of working with customers. Be sure to say hello when you stop in!



*Tire personal waiting to help you. Cory, Grant, and Mathew.*

## Energy



PETER WILSON  
Propane Sales

We'd like to congratulate Cody Thurmer on his retirement! Cody has been with Hutch Co-op for 11 years as a propane driver, serviceman, and agronomy tender driver. At the end of July, he officially retired but has generously

agreed to stay on part-time, assisting with service work and training new personnel. Cody's knowledge, strong work ethic, and great personality have been a huge asset to our team. Congratulations, Cody—enjoy your well-deserved retirement!

Looking at the propane inventories, they started off slow this year but are looking good. Transportation, however, in the past has been tight at times during the winter. To help us provide the best service to you, please keep an eye on your tank level and call in around 25%. We do offer monitors that run on cellular data. They plug right into the gauge on the tank. They are available to rent annually if you choose to stay on Will Call or they come complimentary for customers on Regular Schedule Delivery. The monitors aid us in knowing where your tank is at and with routing, so we can be the most efficient in keeping you warm this winter. It is also very helpful to keep a cleared path to the tank. This makes pulling the hose easier on our drivers, but most of all it keeps them safe from falling,



stepping on objects hidden under the snow, or from walking off a retaining wall when the snow has been deep enough.

For refined fuels, the inventories have stayed low keeping the markets firm. I have had people ask me this year about the difference between B5 and B20. This refers to the percentage of bio in diesel ex: B20 = 20% Bio. B5 is mandated to start October 1st and as we get colder we will offer Seasonally Enhanced B3.3 and WinterMaster B1.4. The Seasonally

Enhanced is composed of 30% #1 and 70% #2 which is good to -15°F. WinterMaster is 70% #1 and 30% #2 good to -30°F. If you are wondering if you should go with Premium or not, we highly recommend Premium. The detergent package Cenex offers consists of: Cetane Booster helping with combustion, Injection Cleaner keeping your injectors clean, a Lubricity Improver that helps keep your engine running smooth and lubricated, a Corrosion Inhibitor prevents rust and corrosion build up on engine parts, and a Demulsifier that forces any water to the bottom of the tank allowing separation to happen faster than under normal conditions. With the Premium you will receive a boost in power and fuel efficiency.

If you have any questions about propane or refined fuels please reach out to me and I'll be happy to help.



# FOR SALE

## USED 550 GALLON OIL TANKS

# \$250 EACH

TWO AVAILABLE

CONTACT DEAN AT 320-234-0417



## Seed Update



DARIEN HILLMANN  
Sales Agronomist/  
Seed Manager

As we wrap up the 2025 growing season, we're already preparing for 2026—and there are some exciting changes ahead in our seed lineup. With today's fast-moving ag industry, Hutchinson Co-op is committed to staying progressive and competitive by partnering with top seed companies to bring you the best genetics available.

### GDM Update

GDM is one of the world's four largest genetic trait providers, and we're fortunate to have a GDM breeding and research center right here in Hutchinson. Each year, thousands of soybean varieties are tested in fields near town.

Through Mustang Seeds—a GDM-owned company—we're able to offer locally tested, world-class soybean genetics. With over 45% of the world's soybeans containing GDM genetics, Mustang Seeds provides growers with proven performance backed by years of research.

In July 2025, GDM announced the acquisition of AgReliant Genetics, the parent company of LG Seeds, AgriGold, and Pride Seeds (Canada). By September, this purchase became official. Since Hutchinson Co-op has historically offered LG Seeds, and both LG and Mustang are now GDM-owned, we've decided to focus solely on Mustang Seeds moving forward.

### Welcome to Wyffels Hybrids

To complement our Mustang Seeds soybean lineup, Hutch Coop is excited to announce that we are now carrying Wyffels Hybrids!

- Wyffels offers corn hybrids ranging from Conventional to SmartStax Pro and PowerCore, all at competitive prices.
- With a corn-only focus, Wyffels adds depth and diversity to our seed portfolio.
- Local connection: Wyatt Kaping of Hutchinson is our new District Sales Manager with Wyffels.

We are excited about this new partnership and confident Wyffels will be a strong fit for our growers.

### Rootworm Control: Plan Ahead

In recent years, we've seen increasing pressure from **Northern and Western Corn Rootworm beetles**, with extended diapause becoming a bigger issue. To protect your crop:

- If you notice root lodging or silk feeding, consider upgrading your corn seed traits. Options include SmartStax, SmartStax Pro, or VT4P with RNAi Technology, all designed for better rootworm protection.
- Pricing on SmartStax has become much more competitive—usually only a few dollars more per acre.
- You can also consider an in-furrow insecticide at planting, such as Bifender, Silencer, or Aztec, for additional control.

### Looking Ahead to 2026

The next growing season will be here before you know it. Stop by your local Hutchinson Co-op Agronomy location to learn more about seed options, pricing, and crop protection strategies. Together, let's make 2026 another successful season.

From our team to yours, we wish you a safe and bountiful harvest!



## Feed, Grain & Storage Updates



MICHAEL IRLBECK  
Grain Division Manager

- Our 18% Poultry Co-op Layers, Soybean Meal, and Express Grower 40-0 are available. We also carry Medium Flake Pine Wood Shavings, with the option to order Small Flake Shavings upon request.
- Deliveries are made on Monday, Wednesday, and Friday. Please provide at least 48–72 hours' notice so we can properly prepare your ration.
- Hutchinson Co-op offers several marketing options, including a Delayed Price Program, O/S Commercial Storage, Cash Contracts, and HTA Contracts to fit your needs. Call us to discuss what works best for you.
- Drying Fees will be \$0.05 per point after 15% on corn and 13% on soybeans.
- Storage Rates for 2025:
  - ◊ 4 cents – Delayed Price Program
  - ◊ 6 cents – Commercial Storage
  - ◊ 5 free storage days are included.
- After the 5 free days, grain will transfer into the DP Program.
- Checks are written on Tuesdays and Thursdays with 24 hours notice required in advance.

## Adams Street C-Store



NICHOLE DEGN  
Adams Street C-Store  
Manager

Our car wash at our Adams Street location has officially been open for a year, and customers are loving it! Many are happy that we kept the same setup, including the popular touch-free wash option.

Pick up a **prepaid car wash card**. You can load as many washes onto the card as you like and reload it anytime—it's quick and easy. A **Free vacuum** is available on the side of the car wash near the exit and **Free air** for your tires is available too! Look for the bright green hose located on the side of the car wash.

Fall is here, and so are our customer favorites: Pumpkin Spice Cappuccino and Breakfast Blend Coffee. Our top-selling energy drinks are Celsius and Alani.



Jude Cruckson, Brenden Ziegler, Taker Finnell  
not pictured: Nathan Shumann  
**Best of luck in your Senior year!**

# HC Hutchinson Co-op

AGRONOMY ENERGY GRAIN

1060 5th Ave. SE  
Hutchinson, MN 55350

PRSRT STD  
U.S. POSTAGE  
PAID  
PERMIT NO. 472  
BRainerd, MN

## Fill 'er Up! \$1.00 Off

20 LB TANK OR LARGER •  
FILL OR EXCHANGE  
1110 Hwy 7 W, 600 Adams St &  
Corner Market Locations

Limit 2 tank fills per customer, per visit.  
Not valid with any other offer or coupon.  
No copies or facsimile accepted.  
Offer expires 10/31/2025



## Gift Cards for Gallons

Customers earn one \$50 VISA® gift card  
for every 100 gallons of qualifying  
lubricant purchased between  
November 1, 2025 and February 28, 2026.



## HUTCHINSON CO-OP

Web site:  
[www.hutchcoop.com](http://www.hutchcoop.com)

Toll Free Phone  
1-800-795-1299

Business Office  
1060 5th Ave SE  
Hutchinson  
(320) 587-3079

Silver Lake C-Store  
916 Hwy 7 E  
Silver Lake  
(320) 327-2500

Energy Division  
1110 Hwy 7 W  
Hutchinson  
(320) 587-3079

Elevator Division  
1060 5th Ave SE  
Hutchinson  
(320) 587-4647

Service Station  
1110 Hwy 7 W  
Hutchinson  
(320) 234-0407

Adams Street C-Store  
600 Adams Street  
Hutchinson  
(320) 587-6537

Arlington Agronomy  
23189 Hwy 5 N  
Arlington  
(507) 964-2283

Hutchinson Agronomy  
1420 Adams Street SE  
Hutchinson  
(320) 587-3229



## Fall Tire Sale October 20th - November 7th, 2025

We will have a variety of passenger and light truck  
tires, including private and major brands, at special  
prices. Stop in to prepare your vehicle before the first  
snow hits.

Tire Department 320-234-0420  
Service Station  
Hwy 7 West in Hutchinson

# \$1.00 Off

## 50 lb or larger bags of fertilizer

HC Hutchinson Co-op  
AGRONOMY ENERGY GRAIN



Valid only on "Award" and "Green Pro" brands. Green Pro varieties 9-23-30, 29-0-20 and 19-19-19 available.  
Limit 10 per customer per visit. Not valid with any other offer or coupon. No copies of facsimile accepted.  
Offer valid until 10/31/2025